

The Covert Use of Radio Frequencies to Control Human Behavior

by Jeremy James



Radio waves of many different frequencies are virtually everywhere, even on the tops of high mountains. Most of them are completely harmless. We can think of them as ripples in the electromagnetic sea which fills the atmosphere.

They can normally penetrate buildings, but extremely thick walls and certain kinds of metallic shielding can block them. So too can a *Faraday cage*, a fine mesh of conductive material.

The earth's magnetic field is itself a tiny, continuous ripple in the electromagnetic sea. Since this ripple is extremely stable, a Faraday cage will not block it. This means a person sitting inside a Faraday cage could still use a compass to find the magnetic north.

Highly unusual

A navigator's compass is one of the most unusual devices in common use. Real physical motion – the movement of the needle – is produced solely by a ripple in the electromagnetic sea. The ripple itself is perfectly stable and always moves in exactly the same direction, towards magnetic north.

It is worth reflecting on this phenomenon since, when contrasted with other aspects of our physical reality, it is quite extraordinary. The compass needle could be set in motion by a nearby magnet, but there is no need for a magnet. The needle is both directed and powered by the same electromagnetic ripple. As a physical phenomenon it involves the transfer of energy from one node (the earth) to another (the needle). And it all happens wirelessly.



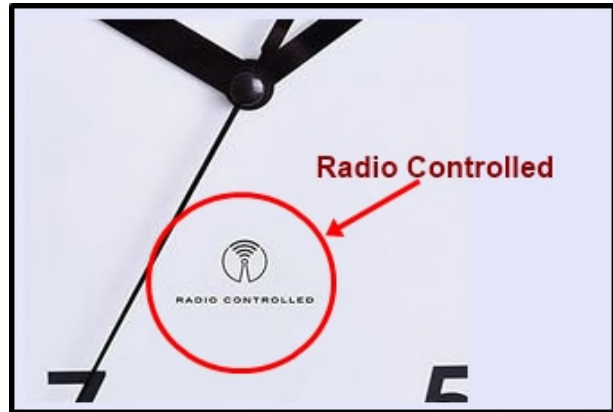
Even more extraordinary is the fact that a quantum-level event – a ripple in the electromagnetic sea – can cause a discrete macro-level event, the movement of a piece of metal. The disproportion in scale is staggering, going from macro, to micro, to nano, to quantum. It's as if an ant had tossed an elephant into the air!

The covert use of radio frequencies to control human behavior is based on the same principle.

Radio-controlled timepieces

We can get a better understanding of the way it works by examining an everyday example. Despite its widespread use over many years, it is probably fair to say that few of our readers have actually seen this application in action. Radio-controlled clocks are on sale on many Internet sites (from a variety of manufacturers) but we would hardly guess, from a perusal of those sites, that these everyday objects possess a very unusual property.

The analogue specimen below is about 8 inches in diameter:



The buyer doesn't set the time on these clocks. Instead he inserts the battery and leaves the clock near a window, where the incoming radio signal is strongest. The signal is broadcast continuously from a large antenna in Anthorn, Cumbria (for users living in the UK and Ireland). It may take the clock several hours to detect the signal, but when it does it adjusts itself to the correct time. In a region with 'daylight saving', where clocks are adjusted twice a year, the clock receives the relevant radio signal and again adjusts itself by moving the hands forward (or back) by the required number of minutes.

Here is a comment posted online by one satisfied customer:

Reviewed in the United Kingdom on 28 January 2021

Verified Purchase

This clock is very impressive for the tiny price I paid (~~£12.95~~). According to the instructions it can take up to twelve hours for the clock to sort itself out and show the correct time, but I was lucky and it took about half an hour after I put the battery in and hung the clock on the wall. It's great to have a clock in the workshop that I can rely on, and one that will even put itself forward or back when British summer time starts or ends.

The workshop where I hung the clock is in the basement of a Victorian built house, so it is surrounded by thick heavy brick walls - no wooden framed partitions are in this building at all. Still the clock found the radio signal to set itself without any trouble, so unless you live somewhere with very poor radio reception you ought to be fine. It ticks away on the workshop wall and helps me to curb my tendency to work too late into the evening.

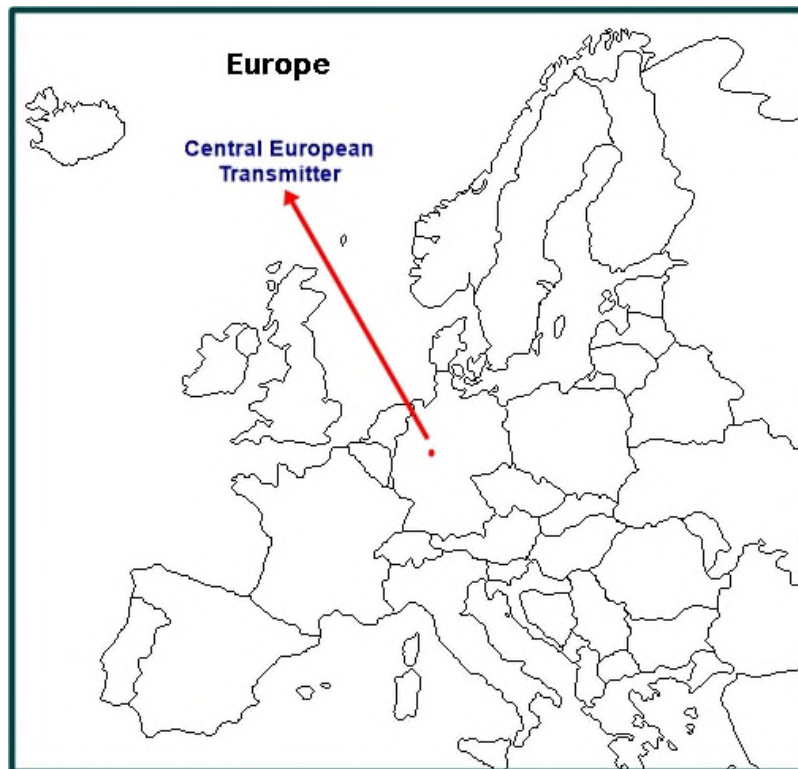
Once the battery is inserted, the clock 'waits' for the radio signal. The longwave signal is not easily detected by the small receiver in the clock.

The signal for the whole of the UK and Ireland emanates from a location that is hundreds of miles distant from many of the devices whose physical behavior it affects. (A corresponding longwave transmitter, which serves much of northern Europe, is located near Frankfurt in Germany.)

As the customer noted, the clock he bought “will even put itself forward or back when British summer time starts or ends.” Radio-controlled clocks (and watches) ‘listen’ for the signal at least once a day, adjusting their hands by a second or two, or more if necessary, to bring themselves back into perfect alignment with the atomic clock located in Cumbria (or Frankfurt).

Centralized control

One can think of the atomic clock as a type of robot controlling tens of thousands of clocks and watches across Europe. The people who read these devices are making decisions that affect their daily lives based on the time shown on their respective timepiece. Overall, this is a sensible use of technology to co-ordinate social behavior.



The signal does this for both analogue and digital clocks and watches. The phenomenon is less impressive when viewed on a digital timepiece because there is no physical movement, only numerical adjustments. But on an analogue device (with moving hands that indicate the time) we see real physical motion.

What interests us in all of this is the principle behind it. A wireless signal broadcast from a room in Frankfurt or Cumbria actually moves the hands on millions of timepieces scattered across Europe! The owners do nothing and detect nothing. The system works invisibly, seamlessly and perfectly – unless the atomic clock malfunctions. If that happens then ALL of these clocks and watches will give the wrong time and potentially serious problems could result.

How can this be used on humanity?

Seen in the abstract, we have here a totalitarian dream, a single device wirelessly exercising silent control over millions of lesser devices distributed over an extremely large geographical area.

One might reasonably ask – as many tyrants are sure to have asked – whether a similar system of control could be applied to human behavior? What would be required to build such a system?

Well, to begin with, the longwave signal would be far too weak to carry the information needed to affect human behavior. It would be interrupted constantly by changing weather conditions and physical obstructions.

The human population would need to possess some kind of radio-frequency receiver to capture and feed the signal, with its coded information, directly into the organs selected.

One would also need extensive knowledge of the way these electromagnetic frequencies affect the human nervous system and the many glands and organs that modulate human behavior.



News report of a famous experiment conducted in 1963 where José Delgado stopped a charging bull with only a radio transmitter. An implant in the bull's brain received the radio signal and immediately brought the animal to a halt.

Scientists in the USA, the USSR and a number of other countries began to study this subject in depth in the 1950s and by the late 1970s were well on the way to developing solutions to these problems. They had also identified the kind of technology they would need to build an efficient largescale system capable of ‘controlling’ a large population.

For the sake of simplicity, we will limit our definition of ‘control’ to an ability to wirelessly stimulate two basic human emotional states, anger and depression.

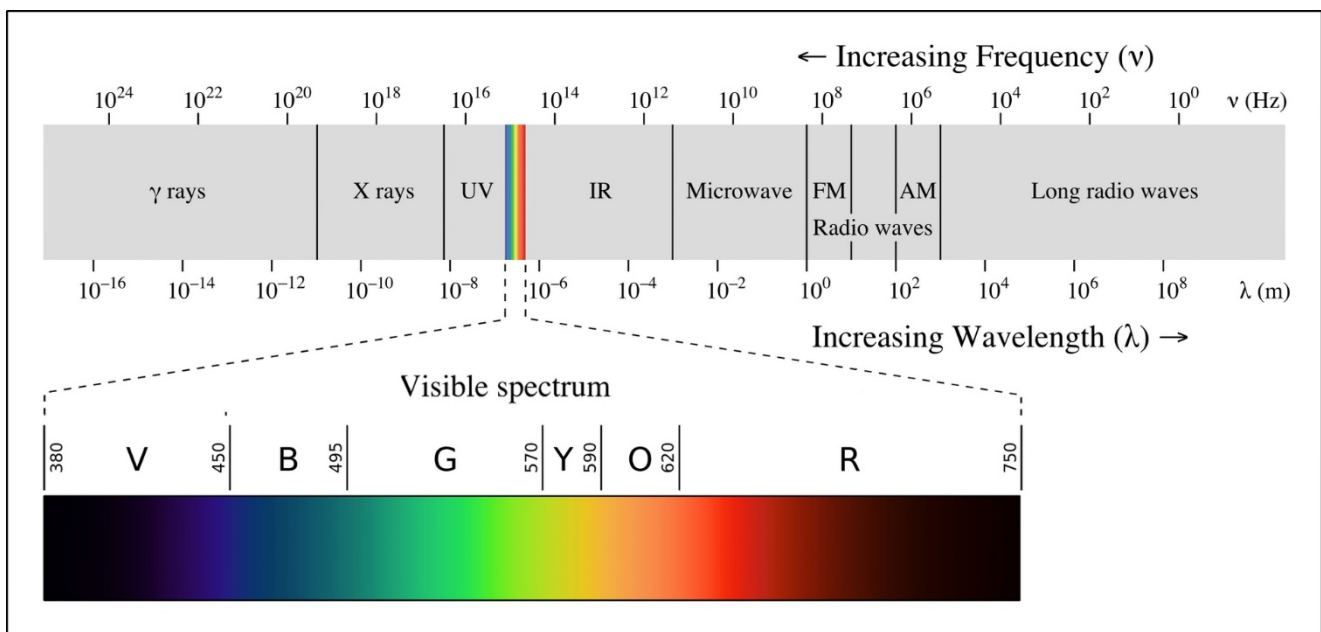
For example, if a state of intense anger is induced in a large population while they are watching a news item of national importance on television, they can be made to hate a particular group of people. They will believe the anger rising inside them is a product of their moral revulsion and will behave accordingly. This anger can then be directed by the media at whatever ‘target’ the government has chosen.

Wirelessly induced depression, on the other hand, could be used to placate a population and make it virtually impossible to mount any serious resistance to what the government is doing.

The required technology

Firstly, the signal in the proposed system would need to be strong enough to reach everyone in the target group, including the population as whole, and maintain constant contact with them. It would also need to carry enough information or data to ‘instruct’ the human body to respond as required. This problem can be solved by using the microwave part of the electromagnetic spectrum – see 10^{10} in the chart below.

There is one drawback with this, however. The microwave part of the spectrum attenuates (dissolves) very quickly and works only over short distances (around 100 yards or so). The drawback is overcome by placing a network of microwave antennas in the target area, where people work or reside.



With most of the population living in cities and dense suburban areas, an extensive network of 5G (microwave) antennas would reliably send the requisite signal, continuously and simultaneously, to everyone in the target group.

Microwaves also carry far more energy than radio waves. In fact they are literally millions of times more powerful and are capable of heating and harming human cells. [Given that we are only looking at this system as a means of controlling a human population, we will not address further in this paper the alarming scope that it offers to also injure and kill the same population.]

The additional energy imparted by microwaves can be fed directly into the nanoscale devices in the human body, allowing more sophisticated operations to be carried out without any physical connection. In a sense the system is mimicking the earth's electromagnetic field by providing both the instructions and the power needed to carry out those instructions.



Residents in a city in Peru demanded that a massive 5G tower (disguised as a tree) be taken down.

Identifying the frequencies and electrical codes

The next challenge is to develop a way of getting the human body to absorb these signals and incorporate the information received into its neural network.

Given that every cell in our body is controlled by electrical impulses, the problem is one of identification, namely, discovering the sequence of electrical impulses that produce the principal operations in each type of cell. This could be accomplished over many years by using old-fashioned trial and error. For example, each of the main muscle groups in the leg could be studied extensively to determine which signals produced the desired degree of contraction and relaxation in each muscle. Once the complete signal set had been identified for just one individual, it would likely furnish a template applicable to all humans.

If electrodes were implanted in the subject's leg, allowing the electrical impulses to be sent to the relevant nerves, his legs could be made to move involuntarily in whatever manner the operator desired. Experiments of this kind have a long history. Galvani was doing this with frogs in the late 18th century!

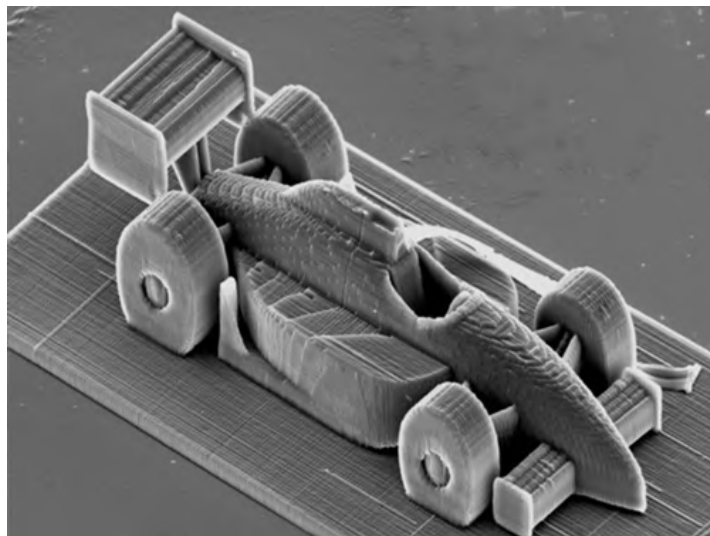
If the implanted electrodes included a tiny receiver, the necessary movements could be induced wirelessly using radio signals. Ground-breaking experiments along these lines were already being carried out on the brains of live animals in the early 1960s [See Delgado insert above].

Stealth control on a massive geographical scale

An approach like this could never work on human beings because they would never allow electrodes to be implanted for this purpose. Besides, even if they did, the time and expense required to surgically engineer even a few thousand people would be prohibitive.

The solution, alas, is simple – make the electrodes so small that they can be implanted vicariously using high-altitude aerosols, contaminated food products, and vaccines. Nanoscale electrodes would be small enough to move easily through the subject's bloodstream and migrate to every part of his body.

This kind of technology, which has been around for more than twenty years, permits the manufacture of nanoscale objects smaller than a blood cell. Advances in miniaturization have enabled tiny complex devices to be manufactured to exact specifications and, importantly, in large quantities. In addition, if the devices themselves are made of a substance that is responsive to electromagnetic radiation, they can be controlled wirelessly using 5G.

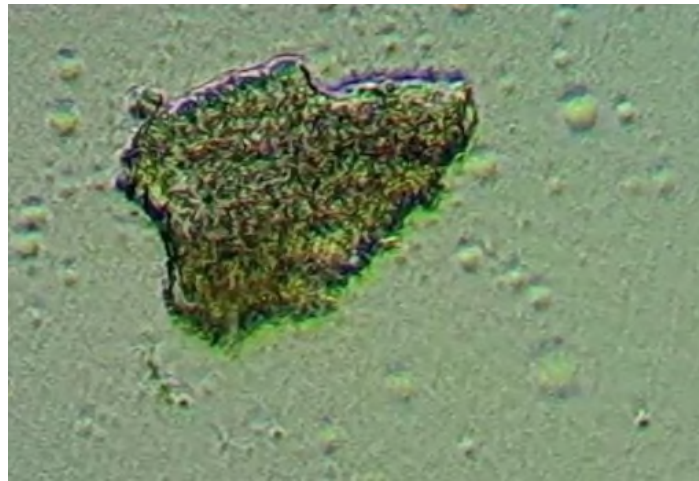


**3-D model of a racing car, ten times smaller than a grain of sand.
This was made 10 years ago.**

Nanoscale particles are being added to vaccines

While analyzing vials of the Pfizer Covid vaccine, many independent scientists have found (and photographed) nanoscale devices made of graphene. Lacking the right kind of technology it was not possible for the scientists to establish what these tiny devices actually do. However, for our purposes it is sufficient to note that the vaccines contain nanoscale particles of graphene and thus can potentially be used to influence human behavior.

Many medical doctors and scientists who have studied the electrical properties of living tissue have found that each organ in the human body has its own electrical frequency. Clinicians who use the Rife machine claim to be able to direct therapeutic doses of electrical stimulation to selected parts of the body. They employ a set of tables which specify, for each organ, the relevant frequencies and the associated disease types for that organ.



Graphene-like structure found in a flu vaccine (2022)
[Source: La Quinta Columna]

If this bio-frequency model is correct, then the creators of the mind-control 5G-system are using it to target specific areas of the brain. For example, the amygdala and the hypothalamus control the anger response, while the amygdala and the hippocampus play a major role in depression. Signals designed to stimulate those parts of the brain, following a protocol worked out in clinical trials, could be sent instantaneously via 5G to an entire population. Violent riots could erupt from nowhere using this kind of technology.

CONCLUSION

Christians who are faithful students of God's Word will appreciate how little the Enemy leaves to chance. He wants to control everything and everyone. In his passionate desire to emulate God he uses every trick in his arsenal to bend mankind to his will. We know he has made extensive plans to send his 'son' (the Antichrist) to rule the entire earth in the place of Christ. Since he has only one chance to pull this off, he is certain to make full use of any scheme or stratagem that weakens a person's ability to exercise free choice and reject his 'son'.



**Relief at a church in Toulouse, France, showing Simon 'Magus' accompanied by two of the demons that served him.
"For I perceive that thou art in the gall of bitterness, and in the bond of iniquity." (Acts 8:23)
- Peter's words to Simon**

For Satan, therefore, mind control is not an optional or occasional weapon in his war against mankind but a key component in his overall plan.

One way or another he intends to infiltrate the consciousness of his victims – the whole of mankind! – to such a degree that they have no way to evade his spellbinding power. When the Antichrist arrives the majority of people will be won over quite easily by his enticements.

The Word of God tells of Simon, a magus, who used sorcery to gain control over a large following in Samaria:

"But there was a certain man, called Simon, which beforetime in the same city used sorcery, and bewitched the people of Samaria, giving out that himself was some great one: To whom they all gave heed, from the least to the greatest, saying, This man is the great power of God. And to him they had regard, because that of long time he had bewitched them with sorceries." (Acts 8:9-11)

What an important passage of Scripture! Early writers of church history recorded details of his life which we cannot substantiate, but the text of Scripture tells us clearly that Simon was a magician who greatly impressed the common people with his occult abilities. He commanded great respect and professed through his words and magical feats to be a "great one", either a prophet of God or a man imbued with divine authority and power. He may even have had occult skills akin to those exercised by the magicians in Pharaoh's court, who could turn a wooden staff into a snake, transform water into blood, and manifest frogs seemingly from nowhere: **"And the magicians did so with their enchantments, and brought up frogs upon the land of Egypt." (Exodus 8:7)**

The word “bewitched” occurs twice in the passage cited above. He “used sorcery” (*mageuo*) and “bewitched” (*existemi*) the people of Samaria...[and]...”bewitched” (*existemi*) them “with sorceries” (*mageia*). The word *pharmakeia* (which is usually translated as sorcery) is not used in this passage, but we can infer from the emphasis on bewitchment (*existemi*) and magic (*mageuo*) that he probably used *pharmakeia* (drugs and potions) as the occasion required.

A person who is “bewitched” is under mind control. His will and his thoughts are being influenced in some manner by another person or demonic entity. Generally speaking, apart from a vague feeling of oppression, a victim of bewitchment is usually unaware of this external influence.

A personal experience

When I was in Ghana in 2008 I sat near an audience of about 200 people while the master of ceremonies addressed them. He opened the session with some light-hearted introductory remarks and, after a few minutes, made reference to a certain African footballer. The moment he said his name the entire audience fell completely silent. The lively hum of a Ghanaian audience vanished in an instant and they all fell under his spell. This man was a high-level witch and he had just used a code word to trigger an altered mental state in his listeners. He had used the name of a fictional footballer merely to disguise what he was doing.

Who can say how many tribal ceremonies and other rituals these people had been through before they reached this stage of susceptibility? One could just as easily ask how many television programs the average American must watch before the subliminal conditioning starts to take effect, or how many times an unsupported assertion must be repeated in the media before he believes it to be true.

This is certainly a dark and dangerous science. With the arrival of nanotechnology, a highly subversive form of *pharmakeia*, it has advanced to a completely new level. The brain of a person impregnated with undetectable nanoparticles can be made to release specific hormones and neuro-chemicals in response to a radio signal transmitted from a location hundreds of miles away. Millions of brains can receive the same signal at the same time, resulting in mass behavior where each participant firmly believes he is acting solely under his own volition.



If a longwave radio signal can move the hands on a clock in another country, we should not be surprised that much tinier movements can be induced within our brains using more sophisticated technology. Just how much can be done with this 5G-based system is still unclear, but we dare not take it for granted or imagine that those who designed it will not push it to its limits.

Christians need to pray for their own protection and for the protection of other believers. We need to familiarize ourselves with the assault weapons and tools of oppression that the Enemy is using to beguile and conquer mankind. As the Word of God says, we cannot allow ourselves to be ignorant of his devices:

**“A prudent man foreseeth the evil, and hideth himself:
but the simple pass on, and are punished.”
– Proverbs 22:3**

**Jeremy James
Ireland
March 17, 2022**

- SPECIAL REQUEST -

Time is running out...

Regular readers are encouraged to download the papers on this website for safekeeping and future reference. They may not always be available.

For an easy way to download all papers (over 300), please email me.

We are rapidly moving into an era where material of this kind may be obtained only via email. Readers who wish to be included on a future mailing list are welcome to contact me at the following address:-

jermypauljames@gmail.com

For further information visit www.zephaniah.eu

Copyright Jeremy James 2022