

La Palma and the Great Reset

by Jeremy James



By now most people will have heard of “the Great Reset,” even if they are not quite sure what it means.

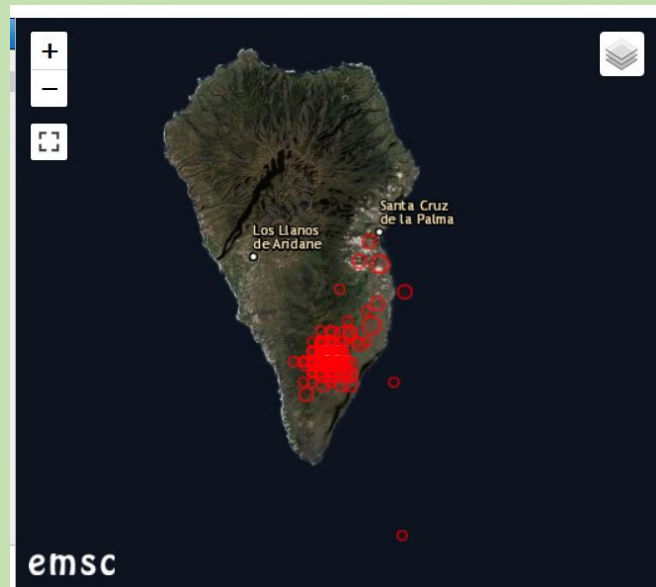
In an earlier paper, *The Fourth Phase of Mass Insanity* (#289), we examined the circumstances under which this carefully planned financial calamity is likely to be triggered. We reproduce below the section of that paper in which we discussed the role that the island of *La Palma* may possibly play in this critical transition.

An event that may trigger ‘The Great Reset’

The Elite have boasted repeatedly of their plan to impose a ‘Great Reset’ on the world economy. This will trigger the greatest transfer of wealth in history and wipe out the middle class of all nations. Given that the Elite revel in dramatic demonstrations of their supremacy, we can expect the ‘Great Reset’ to be triggered by a calamitous event of some kind. They have many ways to do this but the one they are most likely to favor is an event which places all blame on an act of God. This is why the La Palma volcano is so significant.

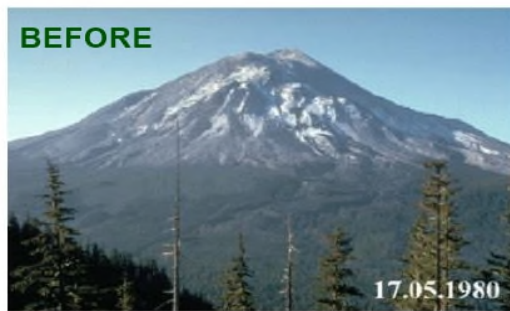
For at least two decades various “experts” have pointed to the possibility of the collapse of the island of La Palma in the Canaries should its active volcano experience a violent eruption of magnitude 6.0 or so. The resulting tsunami, they have speculated, would devastate low-lying coastal areas on both sides of the Atlantic.

We must rely on the computations made by seismologists and oceanographers in assessing whether or not this dark scenario is realistic. What is clear, however, is that an event of that magnitude would furnish the Elite with a perfect opportunity to detonate submarine explosives along target coastlines and generate a tsunami of sufficient force to accomplish their purpose. The public would naturally assume that the tsunami was produced exclusively by the collapse of La Palma.



The island of La Palma in the Atlantic Ocean

The Illuminati may already have conducted several exercises in recent decades to test the feasibility of their plan. The explosion of Mount St Helen’s in Washington State on 18 May 1980 was an extraordinary event, creating the largest known debris avalanche or landslide in recorded history. We have no way of knowing whether or not this was caused by earthquake technology. We do know, however, that seismologists all over the world were greatly surprised by its suddenness and ferocity. Apart from Mount Pinatubo in the Philippines in 1991 (another test run?), no volcano in the last hundred years has exploded in this way.



Mount St Helens

- other possible test runs

A second possible 'test run' was the awful tsunami in the Indian Ocean in 2004 which struck Indonesia, Sri Lanka and Thailand and killed nearly a quarter of a million people. The tsunami was allegedly produced by a submarine megathrust earthquake. Perhaps it was. But the US military have been experimenting with the artificial production of tsunamis since 1945 so, while we would gladly accept the official explanation, we would be naïve to discount other possibilities. Given that we live in a world where phenomena like this can be created by artificial means, with little prospect of discovery, the possibility must be kept continually under review.

A possible third test run was conducted in March 2011 when another megathrust tsunami struck the east coast of Japan and caused widespread devastation, killing nearly 20,000 people. The damage to nuclear reactors in Japan prompted Germany, a major industrial power, to permanently shut down and decommission its own extensive network of nuclear reactors. As a result Germany is now almost wholly reliant on Russia for its energy supply. These are the kind of strategic errors – or treasonous political decisions – that are paving the way for a New World Order.



Devastation in the wake of the Fukushima tsunami, Japan, 2011

As a watchman ministry we can only study the pattern of world events and assess their significance by reference to what we know the Enemy is trying to achieve. Since we don't know the future – except where the Word of God has revealed it – we must do our reconnaissance and try to guess where the Enemy will strike next. This is far from an exact science! Having said that, the La Palma option – toppling a mountain into the Atlantic Ocean – must be especially attractive to the Elite. It would allow them to blame God – our Creator – for a disaster engineered by the servants of Satan. Blame for the resulting disintegration of the international banking system will also be directed at our Creator and not at the scheming deceivers who used it shamelessly to siphon off all our wealth.

Satan himself would take great pleasure in using this option since it is steeped in blasphemy. To see why we need to consider what Jesus said about faith:

“For verily I say unto you, That whosoever shall say unto this mountain, Be thou removed, and be thou cast into the sea; and shall not doubt in his heart, but shall believe that those things which he saith shall come to pass; he shall have whatsoever he saith.” (Mark 11:23)

This is a striking image, is it not? But Satan laughs at this. He intends, solely by his own will, to remove a mountain and cast it into the sea.

In our earlier paper we referred to an episode of *The Simpsons* in which particular attention was given to The Canary Islands, and the location of the island group was even shown on the world map (See photos [overleaf](#)).

The episode looked at a quandary that confronted Mr Burns, CEO of the Springfield nuclear power plant. It is important to note that the character of Mr Burns is modelled on Jacob Rothschild:





From an episode of *The Simpsons*, first aired in March 2003.



Actual Canary Island group. Compare with the version given in *The Simpsons*.

Smithers, his secretary, told him that, as CEO, he would face serious criminal charges if it ever became known that the plant had dumped nuclear waste under Lego Land. Burns boldly replied, “Ha, ha, I wouldn’t go to jail. The legal owner of this plant would, Canary M Burns.” He then pointed to an organization chart of the plant showing Canary as CEO, not Burns. He also drew back a curtain to reveal the canary in his cage.



**Jacob Rothschild allegedly died on February 26, 2024.
This means the ‘canary’ is about to take center stage.**

The ever cunning Mr Burns had prepared a patsy to take the fall. The destruction of ‘Lego Land’ – the banking system – would be blamed on the canary, not him.

In the long-running TV show, the all-powerful plant represents the corporate cabal that controls the world economy. It is a law unto itself, committing one offense after another to accumulate more wealth, and constantly coming up with clever ways to avoid criminal prosecution.

Even when it comes to the ultimate crime – the destruction of *Lego Land* – the CEO will get away scot-free.

The ultra-rich ‘Elite’ are protecting themselves

The powerful group of families that own and control the world banking system have made similar arrangements. They want to bring down the existing financial system and replace it with one based on an electronic currency and managed exclusively through a centralized computer system. As owners of that system, the Elite will be able to monitor all financial transactions on earth, track all human activity, and impose draconian restrictions on how all income and wealth may be used and accumulated.

If they tried to introduce a system of this kind by consensus, they would get nowhere. They would face intense popular resistance. However, if the existing financial system (*Lego Land*) collapsed, the public would plead with the bankers to bring in a viable replacement. Just about everyone would adopt the new system without demur, even if it meant accepting a digital currency and having all of their transactions monitored in real time by a monolithic computer system.

Placing the blame on a natural disaster

The Elite want to blame the collapse of *Lego Land* on a natural disaster. A mega-tsunami would be ideal for this purpose, provided it struck a vital hub in the world financial system. According to the seismologists, a major volcanic eruption on the island of *La Palma* would send a staggering quantity of rock into the Atlantic Ocean, producing a huge tsunami that would reach the east coast of America in 7 hours or so and devastate New York City. The Stock Market would plummet and the world banking system, already under great strain, would crumble.

The tsunami would be the equivalent of Mr Burns' canary.

It would even appear as though the ultra-wealthy Elite had *themselves* suffered a great financial loss – 'How could they possibly have had a hand in such a catastrophe?'

But this is just one of their many tricks. As the Word of God tells us -

**“...for the children of this world are in their generation wiser
than the children of light.” (Luke 16:8)**

The children of this world are adept at the wicked art of deception. Having worked out their End Time plan many decades ago, they proceeded to dismantle the structures that support our civilization and sent an army of white-collar saboteurs to infiltrate our governments and institutions. The explosive economic and geopolitical situations which they have carefully nurtured over many decades are now reaching maturity. All they need are a few strategic detonators to set an avalanche in motion. It looks like La Palma may be one of them.

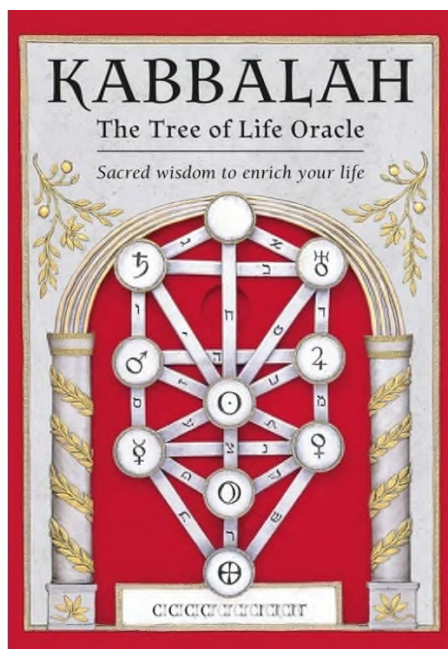
We get a hint of this from the carvings at the entrance to the Cathedral of St John the Divine in New York City:



The apocalyptic scene above depicts enormous waves wreaking havoc on NY city. The Twin Towers were still standing when this façade was erected. This would suggest that the other buildings are also scheduled for destruction, seemingly from a giant tsunami.

George, Michael, Kabbalah and the so-called *Tree of Life*

The people behind this grand plan are applying the magical principles of Kabbalah to accomplish their goals. The Cathedral brazenly displays the ten Sephiroth on the so-called ‘Tree of Life’, with the Serpent himself entwined around it (see below). The Cathedral is supposed to be ‘Christian’ (Episcopalian) but has obviously been taken over by a secret society. It is very rare to see the ‘sacred’ Sephiroth – the ten divine emanations of Kabbalah – on public display anywhere. Only a few of the most important Masonic temples may have them. So why is the so-called ‘Tree of Life’ shown on a ‘Christian’ building in New York City, and why is it associated with an apocalyptic scene depicting the city’s destruction?



The Freemasons evolved from the Rosicrucians, the most influential secret society in Europe for many centuries. The Rosicrucians studied the Kabbalah in depth, unlike the Freemasons, who are given only fragments of its teaching. The carvings on St John’s Cathedral are therefore Rosicrucian in character and probably carry great significance.

In Freemasonry, the bestowal of the badge of Knighthood is a very great honor. During this solemn investiture, the girding on of the sword is accompanied with the words, “In the name of God, of St. Michael, and of St. George, I make thee a Knight. Be brave, be hardy, and be loyal.” The kneeling candidate is then struck on the shoulder with the flat of the sword and told, “Arise, Sir [name].” The same formula is still followed today by the English monarchs.

Why are St Michael and St George mentioned? And why are they mentioned in the same breath as God? These names refer to Michael the Archangel – who is often equated with the Metatron in Kabbalah – and St George, who famously slew the dragon. These are considered mirror personae, where George is Michael on earth, and Michael is George in heaven. As such they prefigure the Antichrist, the long awaited god-man of the Freemasons, the Rosicrucians, the Kabbalists, and the world Luciferian fraternity.

King Charles and the Royal Mint

On 26th February 2024 the Royal Mint issued a new commemorative gold coin in honor of ‘George Michael’, the well-known UK pop star who died in 2016. The coin was officially approved for issue by King Charles III. The Royal Mint described the performer as “*one of the bestselling solo musicians of all time.*”



Obverse and reverse of the commemorative gold coin issued by the Royal Mint. Note the ‘As Above, So Below’ background on the obverse [lefthand image]. Note also the ‘Æ’ ligature in the spelling of the name Michael. This indicates that the name has an esoteric dimension.

When the King of England – and head of the Order of the Garter – approves a gold coin in honor of ‘George Michael’, we should sit up and take note! In the strange world of occult symbology, where great importance is attached to quasi-ceremonial acts of this kind, we are being ‘told’ something.

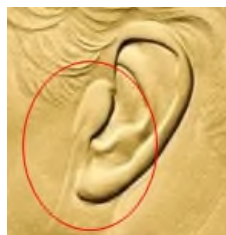
At least one YouTube channel has explored the ‘George/Michael’ question and connected it to La Palma:

<https://www.youtube.com/@israeldiegoriveragenius2th164/videos>

Overleaf: The La Palma coat of arms depicts St Michael standing in a tower above the ocean waves. The shield is surmounted by a royal crown – the ‘Corona’ theme. Beneath it we have reproduced an enlargement of the image of King Charles as it appears on the George Michael coin. It is difficult to ignore the bird (a canary?) perched on his ear.



“**Coat of arms:** Azure over waves argent and azure a tower or masoned sable surmounted by a bust of St. Michael argent clad gules holding dexter a pair of scales or a palm or sinister. A bordure or five violets purpure. The shield surmounted by a Royal crown closed.”



In our paper, *Dark Winter* (#328), we gave a series of screenshots from the video recording of the 2022 Eurovision Song Contest – the 66th – which was held in Turin, Italy. The background to many of the entries comprised an elaborate portrayal of an exploding volcano. We show two of these below.

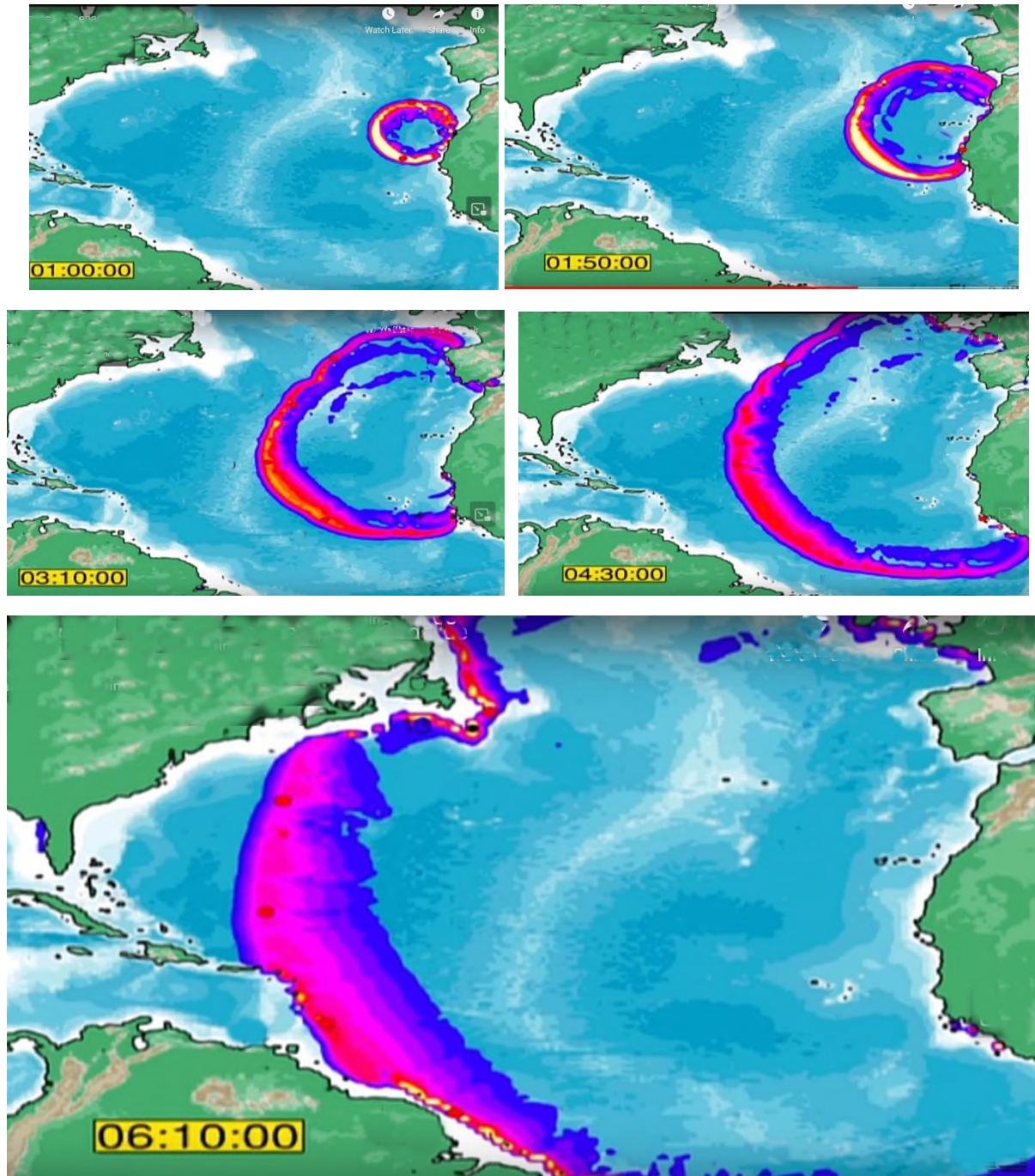
In this screenshot, the eruption is in full flow, with lava streaming down the side of the 'volcano':



The volcano itself is depicted even more vividly in the following screenshot:



Mega-tsunami Scenario – La Palma Landslide



Seismological projection of the tsunami shock wave over a six-hour period.

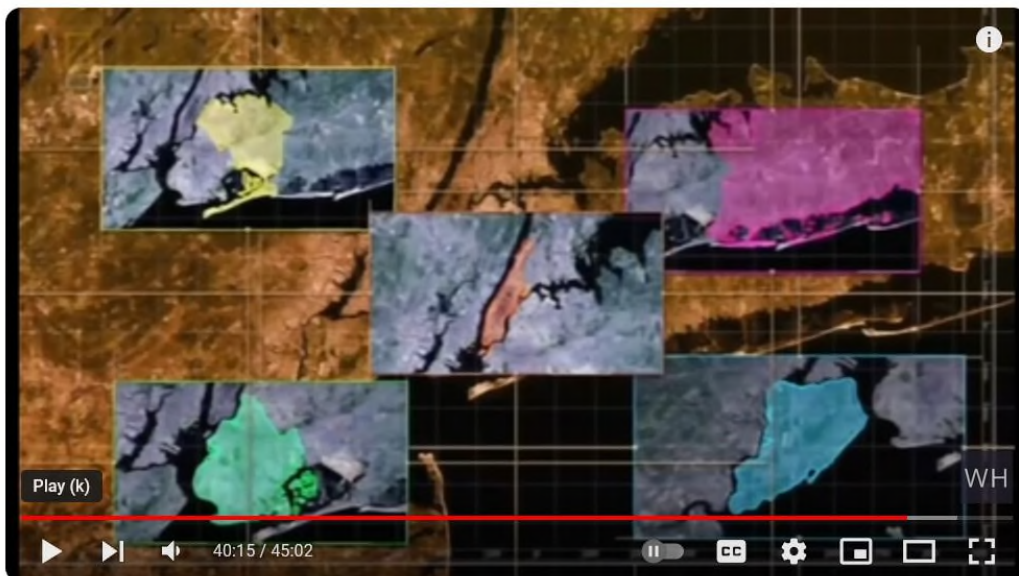
National Geographic Documentary (2011) on a possible La Palma Mega-Tsunami

<https://www.youtube.com/watch?v=zTFEth6V9qA>



La Palma Tsunami Documentary | National Geographic Mega Tsunami HD

Volcanic eruptions inland would trigger a massive landslide on the western side of the island, releasing half a trillion tons of rock into the ocean.



La Palma Tsunami Documentary | National Geographic Mega Tsunami HD

National Geographic states that the authorities in the US will be faced with the possibility of having to issue an Emergency Evacuation Alert for Brooklyn, Queens and Lower Manhattan.

CONCLUSION

As Bible-believing Christians, we place no confidence whatever in the Wicked and their vain pronouncements. We know they are liars and deceivers, just like their demonic master. Having said that, we need to be vigilant and make as much sense as we can of events in the world around us.

The sinister symbols and warnings issued by the Wicked are part of this fallen world, and we know from experience that their esoteric antics can sometimes reveal what they intend to do. If Christians had examined what the ‘Elite’ were doing prior to the Covid hoax, they would have seen that it had been carefully scripted in advance. Fauci announced in 2017 that a pandemic was coming. The Rockefeller Institute said as much in a report published in 2010. The WHO were repeating this dire mantra for several years (and continue to do so). Bill Gates and his GAVI gang were (and still are) doing the same. Then we had the famous **Event 201** in New York in October 2019, a symposium of alleged health experts who convened to discuss ways of suppressing opinions that conflicted with the official account of an emerging pandemic. None of these were symbolic but they were all indicative of the general direction that the ‘Elite’ intended to go.

The opening ceremony at the Olympic Games in London in 2012, however, *was* symbolic. In one of its themes it ‘celebrated’ the terror caused by a dangerous pathogen that attacked children. This ghoulish spectacle anticipated, to some degree, the Covid hoax of 2020 and, seemingly, a subsequent pandemic that *would* cause a high number of fatalities among children. The opening ceremony at the Barcelona Olympics in 1992 depicted a similar pandemic scenario, featuring both a giant Coronavirus and a flock of plague birds:





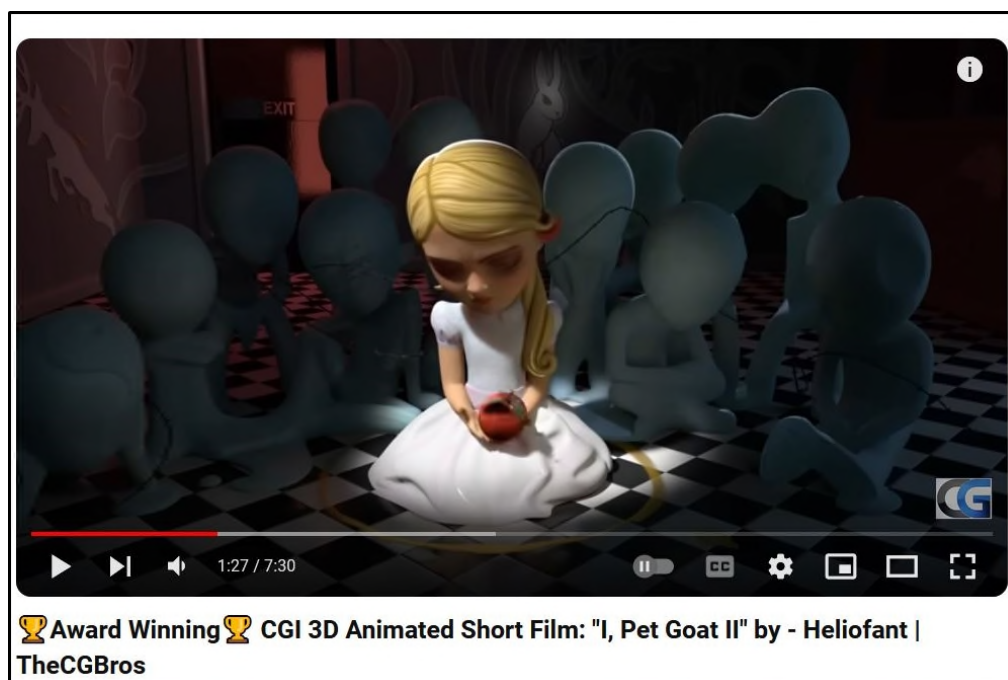
As predictive allegories these symbolic ceremonies are only sketching out events. They don't have anything to say about timing or location. More than likely the groups that choreographed them knew nothing about the specifics. Such matters are handled only at the highest level. Even then, the grandmasters of darkness know only as much as Satan reveals to them. Since he in turn can be obstructed at any stage by the sovereign will of God, the timing of all such events is subject to change.

Nevertheless, the Cabal had some success with 9/11. As a specific date, it was flagged several years in advance, albeit by month and day only. Perhaps they have been emboldened by that 'prediction' and are attempting, through the new release of *I, Pet Goat II*, to fix a date for La Palma.



The animated CGI short, *I, Pet Goat II*, was released in 2012. Seven minutes long, it depicts events in the Book of Revelation from an occult perspective. As might be expected, the coming ‘messiah’, which the video celebrates, is the Antichrist. The video was probably made to promote the Luciferian agenda and to signal to the lower ranks of the Illuminati what the upper ranks were planning.

For some reason the video was withdrawn from YouTube about 18 months ago and only released again about a year later. No changes were announced but, if my memory serves me correctly, a critical scene in the video appears to have had two alterations. These occur at the point where the Wicked declare the start of their so-called ‘New World Order.’ This is depicted by an apple falling from the hand of the virgin goddess, rolling a few feet across the Masonic tiled floor and splitting into two halves. A small black snake emerges from the core.



The moment the virgin goddess releases the fatal apple.

The tiled floor appears to symbolize the ocean, while the splitting of the apple is an explosive rebellious event. Some YouTubers see in the brown portion of the apple a representation of the island of La Palma, while tiles beside the location where the apple splits have two marks, a black one, shaped like a ‘7’, and a white one, shaped like a ‘C’, the third letter of the alphabet. [See screenshot on previous page.]

While I may be mistaken, I don’t recall seeing either of these features in the initial version of the video. Has the La Palma motif been added? And has a date been set, namely 3/7 or 7/3?

We need to fix our attention on God's Word and interpret world events by reference to what He has already revealed. His words are an anchor for our soul. If we allow signs and symbols, dreams and predictions, eclipses and planetary alignments to take precedence over ANYTHING in His Word, we are being very foolish. The Enemy will do all he can to distract us, to shake our faith in the Word of God and cause confusion. Confusion leads to fear and fear leads to more confusion. That's how the Enemy works.

As believers we stand on the Rock and watch as the Enemy prowls about like a roaring lion, seeking whom he may devour. We are not ignorant of his devices. We observe what clues we can as to his intentions, but we NEVER fear him!

Our Lord Jesus defeated him on Calvary and our heavenly Father will send His Son – at a time of His choosing – to execute judgment on the Enemy and all who follow him.

The Luciferians imagine themselves to be incredibly clever, but reality tells a different story. They believe they can oppose God! This is so dumb it beggars belief. They listened to the lies of the Great Deceiver and, despite endless evidence to the contrary, continue to think a deified state awaits them. They play silly games with their occult symbols and secret ceremonies, believing such vain pursuits supercede the sovereign will of God! They really and truly haven't a clue.



**Top left: A scene from *I, Pet Goat II*.
The other five images would fit just as well.**

**“For what shall it profit a man, if he
shall gain the whole world, and lose his
own soul?”**

– Mark 8:36

**Jeremy James
Ireland
March 1, 2024**

- SPECIAL REQUEST -

Time is running out...

Regular readers are encouraged to download the papers on this website for safekeeping and future reference. They may not always be available.

For an easy way to download all papers (over 370), please email me.

We are rapidly moving into an era where material of this kind may be obtained only via email. Ireland is on the brink of introducing a draconian censorship law, the first of its kind in the ‘free’ world, which will shut down sites like this and could result in penalties such as confiscation of property, financial fines and imprisonment for up to five years.

Readers who wish to be included on a future mailing list are welcome to contact me at the following address:-

jeremypauljames@gmail.com

For further information visit www.zephaniah.eu

Copyright Jeremy James 2024